

**Together we care, we learn, we succeed**  
**AROHA AKO ANGITU**



Kotahitanga



Manakitanga



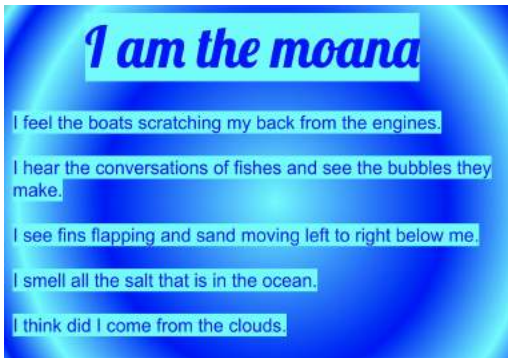
Kaitiakitanga



Rangatiratanga

## IMPORTANT DATES FOR TERM 1

Monday 02 Mar	9.00 - 10.00	Powhiri for new students
Monday 02 Mar	07.00pm	Board Hui
Tuesday 03 Mar	09.00 - 02.00pm	Cricket zones
Friday 06 Mar	02.00 - 03.00pm	Assembly hosted by Room 13
Friday 13 Mar		School Swimming sports
Friday 20 Mar	02.00 - 03.00pm	Assembly hosted by Room 17
Monday 30 Mar	01.30 - 06.30	Goal setting talanoa
Monday 30 Mar		School finishes at 1.00pm
Wednesday 01 Apr	01.30 - 06.30	Goal setting talanoa
Wednesday 01 Apr		School finishes at 1.00pm
Wed 1 Apr - Wed 8 Apr		Scholastic Book Fair
Thursday 2 Apr		Student Inquiry outcome
Thursday 2 Apr	09.00 - 11.00	New entrants visit x 1
Friday 3 Apr	02.00 - 03.00pm	Assembly hosted by Room 19
Tuesday 7 Apr	09.00 - 11.00	New entrants visit x 2
Wednesday 8 Apr	09.00 - 02.00	Swimming Zones
Wednesday 8 Apr		Last day of Term 1
Tuesday 28 Apr		First day of Term 2



By Kingston Tasi Rm13

## TERM 1 2020

### **TE MOANA NUI A KIWA - THE JOURNEYS THAT BROUGHT OUR ANCESTORS** **Just As The Whenua Holds People's Stories So Too Does The Moana**

- How does Te Manukanuka o Hoturoa connect us to our past, present and future?
- If our moana could talk what stories would it tell us?

O le uepega e fili i le po, 'ae tatala i le ao

The fishing net is knotted at night, but untangled in the morning

In this super hot weather our amazing tamariki are well underway with learning about Te Manukanuka o Hoturoa and we celebrate the energy they bring to each day! Constable Mo has also been working with our children on the Kia kaha programme which, 'enables students to develop strategies for respectful relationships where bullying behaviours are not tolerated.' He will be visiting each term to continue this work and to help our children to have positive relationships.



Room 2 explored the waka that came to our playground and began to wonder and ask questions about the people that may have made the waka, where did they come from, who were they, what adventures did they have?

We walked to the foreshore to explore the harbour and begin to gather a deeper understanding of Te Manukanuka o Hoturoa and to think about those people who voyaged here.



We thought about our big question and together we worked to connect the words to wonder what stories our moana has to tell!!

**Chalk it up...** beginning to share our questions to focus our inquiry!!



## **NAU MAI HAERE MAI WHAKATAU MAI / WELCOME TO OUR NEWEST WHANAU**

A special welcome to the newest members of our School that have started so far in 2020:

Siva Ale, Denver Hotai, Jay-Leigh Ikimotu, Henry Johnson, Darius Pole, Rachel Salmon, Blake Thompson and Loloma Westerlund to Room 3

David Fotu, Otis Hooton, Christiano Masoe, Charlie Rattenbury, Quinn Tara and Jay Tuifao to Room 4

Lrae George, Gracie Harris, Owen Pouwhare, Hahleese Rameka-Duncan, Saimone Simpson, Melody-Rose Sina-Holland and Jett-George Uluave to Room 5

Cairo Fifita, Winter Kalapu, Vasiti Nicholas, Brooklyn Powell and David Vunipola to Room 6

Karindis Fotu and Ava George to Room 8, Blake Frandi to Room 10, Dray Fotu to Room 11

Cassidy Arapari Fariu, Baileigh Bedggood-Mapa and Te Aroha Tihi to Room 12

Hinetai Pouwhare to Room 13

Duprie Rameka-Duncan to Room 16

Jordynn Bedggood-Mapa and Anora-Leigh Harris to Room 18



And...

Congratulations to Miss Wilson who had a beautiful baby boy!!! We welcome Oliver to our Mangere Bridge School whanau and send our love to his family with a whole heap of good luck for Miss Wilson as she begins the journey of being a mum!!



**HE HA - High Engagement, High Attendance!**

**Let's get to 95% in 2020!!!!**

**End of Week 4 Term 1 2020 Our average attendance is 88.01 %**

### **ATTENDANCE MATTERS WITH LEARNING**

Absent days can also add up to a large chunk of learning time that children miss out on and this can have a marked influence on their progress. Five days absent across a ten week term is the equivalent of a week of learning!! We also realise that there are many times for families that children need to be absent and we appreciate it when you contact the office to let us know.

Being at school puts tamariki in the place for teachers to make sure learning happens and we are here to work with you, our whanau, to ensure your tamariki are at school everyday. If you need support in any way big or small to make this happen we are here to help. Give us a call, touch base with the teacher, talk the team leader, Ms Bills or Whaea Steph or maybe one of these lovely people can help too.



#### ***Our Mangere Bridge School Kaiarahi Tamariki***

**Whaea Elaina:** as a Kaiarahi Tamariki I work to form a nurturing relationship with the child and to listen and provide counselling support. I work with other professionals in the school and participate in our weekly Help Hui where together we contribute to the best outcome for the child. I am also a Teacher Aide providing learning support for a wide range of children.



#### ***Our Health Team***

**Kate Pike:** Is our nurse who comes Monday, Tuesday and Wednesday to check the health of our children. If you have health concerns and would like your child to visit the nurse, please fill out a referral form at the school office.

**End of Week 4 Term 1 2020 Our average lateness is 7.11%**



**TRACKER....** *is focused on making sure everyone is on time for learning.*

***Our doors to learning open at 8.30 am every morning and our staff are in the school working from 8.00am onwards. To ensure your children's safety please do not bring them to school prior to 8.00am.***

***Contact the office if you would like information on SKIDS before school care***

## OUR SCHOOL IS A TRAVELWISE SCHOOL

### Stop chaos at the school gate

Never stop on yellow lines or double-park around the school. Parking like this can block the view of students and motorists making it hard for students to safely cross the road.

Develop your child's road sense and let them walk the last 500 meters to school.



Please use our pedestrian crossings to ensure your children cross our roads safely.

It is important that you take your child to the crossing and model this with them. Our tamariki are precious and our roads are dangerous!

## SCHOLASTIC BOOK FAIR

Kia Ora whanau..... We have our annual **SCHOLASTIC BOOK FAIR** coming to Mangere Bridge School on the 1st of April and it will run for a week until the 8th of April.

As always it will be filled with a fantastic selection of books and stationery items.

Our fair will open in the mornings from 8.30am - 9.30am and afternoons from 2.30pm - 3.30pm.

We will keep you posted with details closer to the time.



# NEW ENTRANT ENROLMENTS

MANGERE BRIDGE SCHOOL ENROLMENT DATES 2020

Is your child turning 5?  
**ENROL NOW**



## START DATES FOR 2020

Term 1	Term 2	Term 3	Term 4
<b>Tuesday 28th January</b> Whanaungatanga Day	<b>Tuesday 28th April</b>	<b>Monday 20th July</b>	<b>Monday 12th October</b>
<b>Wednesday 29th January</b> Official First Day of School	<b>Tuesday 2nd June</b>	<b>Monday 24th August</b>	<b>Monday 16th November TBC</b>
<b>Monday 2nd March</b>			

Please ensure your child is enrolled a minimum of 4 weeks prior to their start date in order to arrange an entry interview and preschool visits

If your child is due to start school at the beginning to 2021 please ensure you have contacted the school prior to the end of the 2020 school year

For more information about Mangere Bridge School or details on enrolling your child please contact the team at

## GARDENING CORNER

Our students have been busy in the garden getting the soil ready for a new year of exciting plants and kaitiaki learning. In Term 4 last year we planted sunflowers and over summer they have grown into beautiful plants which we have now harvested and collected seeds from.

Our swan plants from the beginning of last year have also produced seed pods which we have been collecting and growing seedlings from. Some of these seeds, plants and other produce will be available in the school office. Money from these will go towards new tools for students to use in the garden and other kaitiaki experiences.



## POLICIES AND PROCEDURES

Mangere Bridge BOT is currently reviewing 1 policy for parents for Term 1 2020

You can logon to our school docs site <http://mangerebridge.schooldocs.co.nz> to review the policies.

Login details are as follows

Username: mangerebridge

Password: bridge

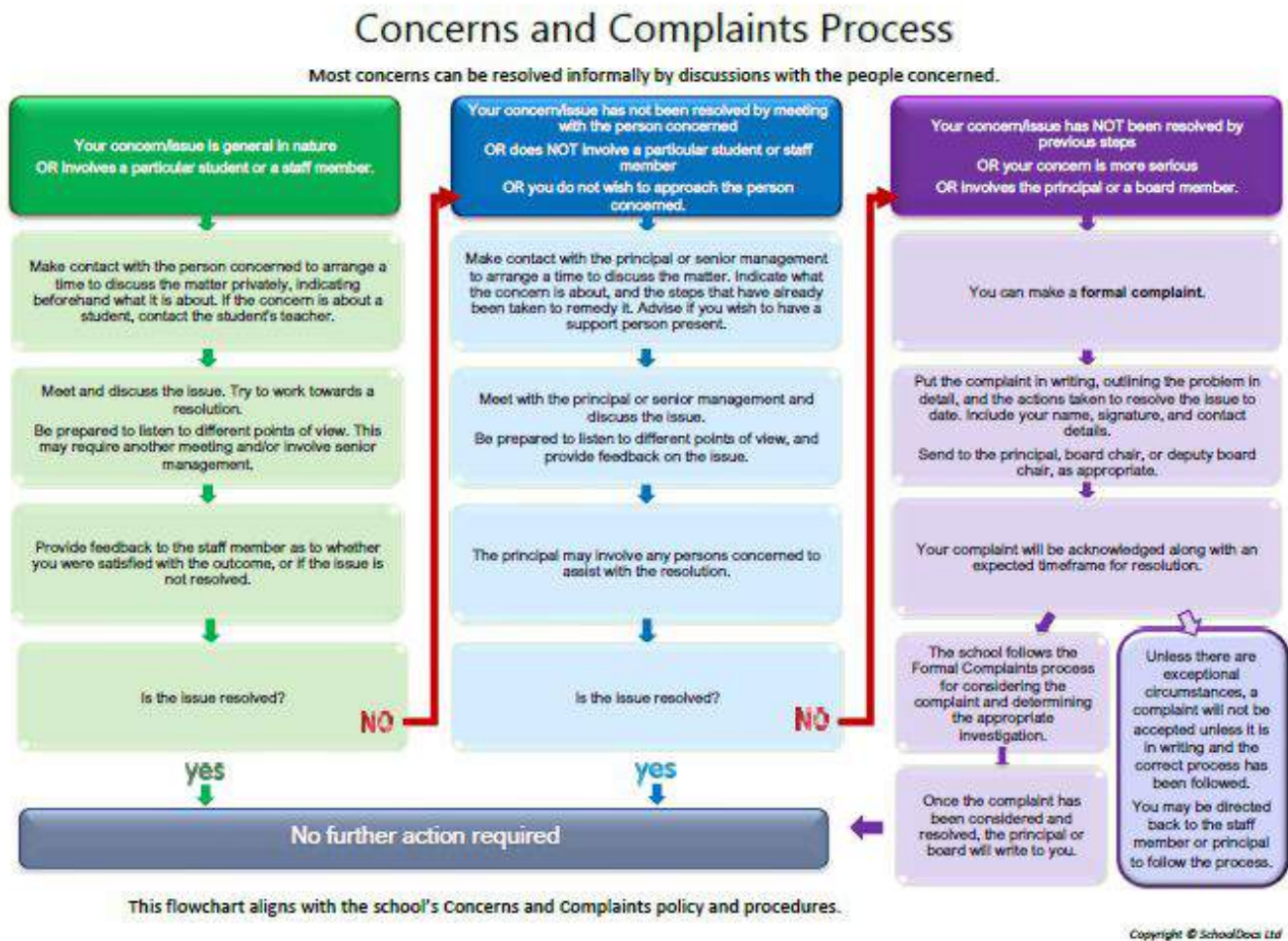
### [Recognition of Cultural Diversity](#)

You can click on the item above and this will take you straight to school docs where you can sign in with the login details also above and review the policies.

Please click on the link below for information on our school policy for Concerns and complaints

## Concerns & Complaints

### Concerns & Complaints Flowchart



## PTA NEWS

Kia Ora from the MBS PTA.

This is notice that 2020's Annual General Meeting (AGM) for the PTA will occur on Tuesday 10<sup>th</sup> March from 5:45pm-6:45pm in the school staff room.

Each year the PTA votes on the positions of its committee at an AGM.

Our current position holders are:

Victoria Piggott-Chairperson

Sue Smith-Secretary

Amelia Jones-Treasurer

Jasmine Hughes-Event Coordinator (LEAVING ROLE)

All current position holders except for the Events Coordinator are happy to retain their positions for 2020.

However we also welcome new nominations (self nominations are fine)!

We would provide a full handover of the position and still remain part of the PTA to guide you throughout this year.

The monthly time commitment of a position holder is probably 2-3 hours (includes the monthly meeting) plus the fundraising events we host.

If you wish to nominate any person or yourself for the positions above, please email

[candacen@mangerebridge.school.nz](mailto:candacen@mangerebridge.school.nz) with the person's name, email address, mobile number and the position you wish to nominate them for.



Please note that you do not need to nominate people to just be on the committee as a member, just turn up to the AGM and provide us with your name.

We are actively seeking committee members as we have had a few parents leave. This involves a meeting for 1-1.5 hours per month and contributing your ideas and sharing contacts/ skills etc. and if you are available, then to help on fundraising event days. You take on as much or as little as you can. Fresh ideas are always welcome, so we hope you join the committee.

**All nominations must be in by Friday 1<sup>st</sup> March 2020 at 3pm.**

If you have any questions regarding what each position or becoming just a member entails, then please phone me on 0275554128 as I would be happy to talk you through it.

It really isn't as time consuming as one may think and we have such great relationships within the committee. We are kid friendly and happy for you to bring kids to any meeting or event. We are basically a cruisy group of people that want to raise money to get things happening for our tamariki at school.

You may also attend the AGM as a guest. Once voting has occurred we will continue with a normal PTA meeting.

Nga Mihi,  
Victoria Piggott  
MBS PTA Chairperson  
027 555 4128  
[victoria.piggott@bjball.co.nz](mailto:victoria.piggott@bjball.co.nz)

## **ECOSTORE PLASTIC RETURN PROGRAMME**

Keep those empty ecostore bottles coming, pop them in the ecostore bottle drop bin in the hallway just behind the school office, and ecostore will collect, wash and remake them into new bottles. Collect enough bottles and our school could receive money to spend on sustainability initiatives.

Together we'll reduce waste and help plastic bottles to be remade over and over again right here in New Zealand and help solve the plastic pollution problem.



## **MANGERE BRIDGE LIBRARY DARE TO EXPLORE CONGRATULATIONS**

Once again the students at Māngere Bridge School enrolled in the summer reading challenge with Auckland Libraries. I would like to congratulate these students for enjoying their summer holidays with us.

Some completed the challenges required and enjoyed a party at Ambury Farm in January to celebrate.

*Mina Momeny, Oscar Schoone, Cerys Davies, Flynn Chandra, Elektra Stowers, Cooper Michalski, Vera Smith, Hayley Duncan, Cole Duncan, Odette Alaalatoa-Dale, August Schoone, Nishtha Pranav, Tereaurahi Te tini, Marlow Yeoman, Samuel Maka, Keith Blake*



Ngā mihi

Naku noa na | Regards

**Loryn**

## OUR BUILDING WORKS

Over the summer holidays the pool area was re-fenced and resurfaced and this has made the area safer for our children swimming. Currently there is a new zig zag pathway that is being built which will connect the lower courts with the classrooms and provide a safer pathway and a more easily accessible pathway than the current steep sloping path. We appreciate everyone's patience while this work is carried out.



## SWIMMING

Children have been loving the cool water on these hot days and we value being able to give them the opportunity to learn to swim! Tamariki are also able to earn a Moana Pass in class which enables 2 children from each class to have a lunchtime swim with Whaea Steph supervising! We recommend that children have their togs at school everyday in case they earn a Moana Pass!!



## COMMUNITY NOTICES



**THURSDAY 27<sup>TH</sup> FEBRUARY 2020**

Kia Ora, Māori E Lōki, Tāwhiri Lāwa & Welcome

We invite all our new whānau & prospective students to our Open Evening from 4pm-7pm Thursday 27<sup>th</sup> February.

Join us to meet with the teachers and tour the school.

2021 Prospectuses and enrolment application forms will be available.

If you are not Catholic but interested in Marcellin College you are welcome to come along and discuss our preparation programme.

All welcome.

**BROTHERS AND SISTERS ACHIEVING TOGETHER**

Safe, friendly environment

Outstanding academic success with achievement for all

A Year 7 - 13 Catholic School founded by the Marist Brothers

617 MT ALBERT ROAD, ROYAL OAK, AUCKLAND 1025 Tel: 09 82565095432 WWW.MARCELLIN.SCHOOL.NZ

**MARIST COLLEGE**   
*Catholic School for Girls, Years 7 - 13*

**OPEN DAY**  
Tuesday  
31 March 2020  
3pm - 6pm

- **Special Character at Marist College... is real, pervasive and alive.** (Catholic Character Review Report)
- **Marist College continues to be a high performing school and provides high quality education for all students.** (Education Review Office Report)
- **Outstanding academic results.**

31 Alberton Avenue, Mt Albert, Auckland 1025 | Phone 846 8311 | [www.maristcollege.school.nz](http://www.maristcollege.school.nz)

# Introduccuton to Rippa Rugby



Start 27th March to Thursday 2nd April

Te Papapa Rugby Club 5 Olea Road Onehunga

For ages 4years - 13years old  
6 week program

\$30 \*Learn basic catch and pass

\*Be in a team environment

\*Make new friends

\*Play Rippa

\*Have fun

5PM - 6PM

To register contact Rugby Development Officer Jim Kuresa-moore for more info 021304721 j\_kuresa@hotmail.com



Suzaku Kan Karate professional and full-time training facility (open 6 days) with highly trained instructors. Classes cater to all age groups from 2 year of age. Every student has the opportunity to thrive in a learning environment that teaches traditional karate skills and values, self-defence, and improves physical fitness. We offer 2 free trial lessons. Call us on 0210286217 or email info@suzakukan.co.nz or visit www.suzakukan.co.nz for more information.



COME & PLAY  
TBALL & FIRST HITS  
We Need You!!  
Ages 4-10yrs

FRIDAY EVENING GAMES AT  
MANGERE MOUNTAIN  
STARTS 5.45PM

FREE FOR THE NEXT 4 WEEKS

E: [onehungamangersoftball@gmail.com](mailto:onehungamangersoftball@gmail.com)

Call Sheila for more information.  
M: 0210375478



T-BALL



APC Car Boot Sale & Family Fun Day  
8:30am - 1pm Saturday 7th March 2020  
66 Wellesley Road, Mangere Bridge

\* Pony Rides \*Food \*Car Boot \* Eftpos  
\*Family Entertainment \*Community Groups & More

Site Bookings Ph: 09 6340763 ext 0  
Email: [office@amburyparkcentre.org.nz](mailto:office@amburyparkcentre.org.nz)  
\$20 per car or \$50 per commercial  
Rain Date 21/03/20



## OPEN DAY

St Paul's College, 183 Richmond Road, Ponsonby  
Thursday 5<sup>th</sup> March 2020. Sessions - 9.30am & 1.45pm

Assembly in the College Chapel, followed by tour

Enrolments for Years 7, 8 and 9  
*Building Men of Courage since 1955*